

**DUAL IN-LINE PINS EDGE STYLE (10) – CS004 and CS004S**

CS004 – no solder applied

CS004S –solder pre-applied

**Contact Solutions Cubed, LLC for your custom designs:**

Solutions Cubed is an innovative electronic design firm. We have created successful designs for a myriad of industries including mass produced consumer products, deep-sea robotic components, and encrypted encoders for the banking industry. We love meeting new customers and are interested in hearing about your design needs.

**Product Description:**

These pins that clip onto PCBs that are 0.0625" thick. Once clipped in place they can be quickly hand soldered onto surface mount pads. They can turn any PCB into a DIP package.

CS004 do not have solder applied. The original manufacturer of this part is Batten & Allen Ltd PN: BA3760-TUBZ-4B-F.

CS004S have solder pre-applied, which make them easier to install and ideal for machine assembly. The original manufacturer of this part is Interplex PN: AA25BB-D56W-OTKD.

To order larger quantities of pins please contact us directly.

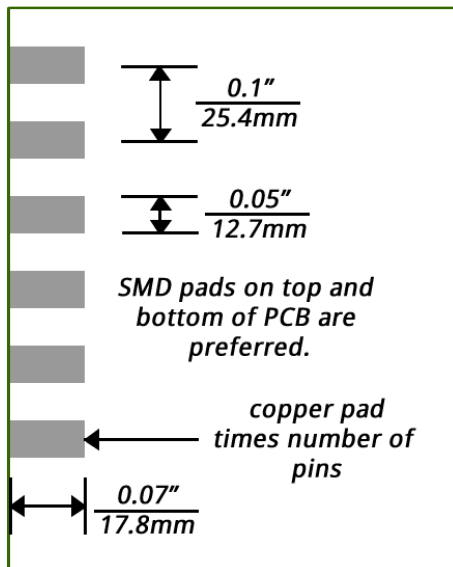
- RoHS compliant
- Pins connected at pin and clip side to make mounting easier.

**Instructions:**

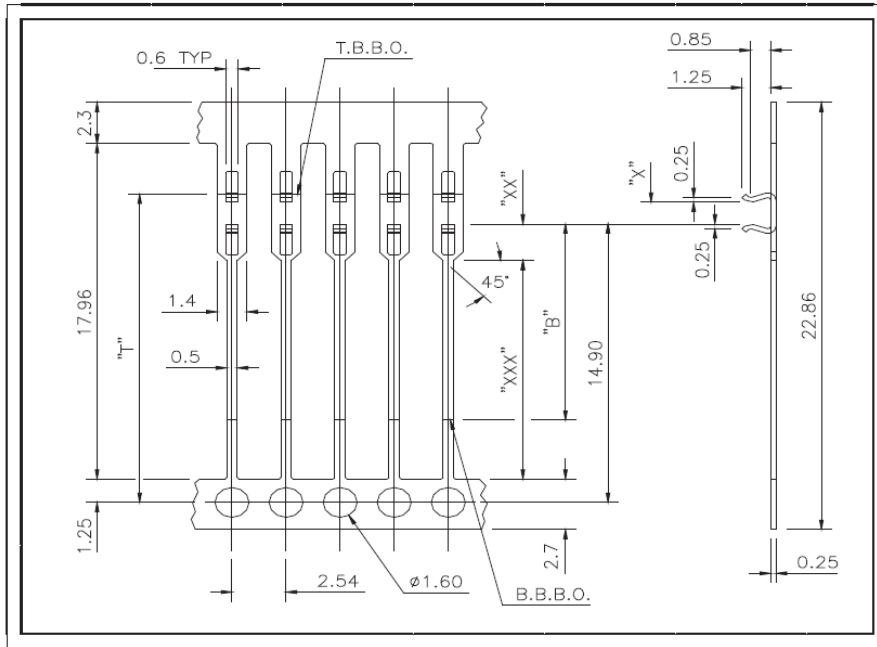
1. Snap PCB side of pins over top and bottom PCB copper pads.
2. Apply solder to the surface mount PCB pads and pins (if using the CS004S you just need to flow the solder already on the pins). If your pads are not electrically connected on the top and bottom of the PCB you may need to solder both sides.
3. Clip off tabs on pin and clip sides that hold the strip together.

**Dimensions:**

Surface mount footprint dimensions.



**CS004 Dimensions:**



**DIL**  
**BA3760**  
 SERIES  
 SHEET 1 OF 1

**Pitch**  
 2.54 mm  
 0.100 inch

**Strip Width**  
 22.86mm  
 0.900 inch

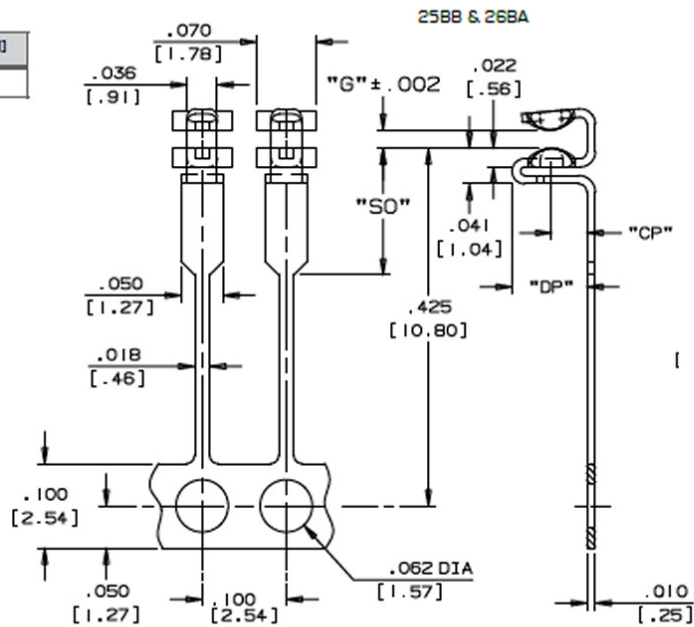
**Material Thickness**  
 0.25mm  
 0.010 inch

Technical Information					Ordering Information					
Substrate Size	Gap Size *X*	Stand Off *XX*	Pin Length *XXX*	Clip Length	Part Number	Top Bar *T*	Bottom Bar *B*	Plating Code	Quantity Per Reel	Wind Style
1.52-1.65mm 0.060-0.065"	1.42mm 0.056"	2.0mm 0.079"	11.70mm 0.460"	1.25mm 0.049"	<b>BA3760</b>	TU	BZ BL	4A	F (50K)	5 to 8

**CS004S Dimensions:**

100 [2.54] PITCH

Drawing Nr.	.DP" IN. [MM]	.CP" IN. [MM]
258B	0.089 [2.26]	0.042 [1.07]



SELECT SPECIFIC OPTIONS TO DETERMINE ORDERING CODE:

TYPE	PITCH (P)	DRWG. NO.	SOLDER LOCATION	GAP (G)	SOLDER TYPE	SOLDER STOP	STAND OFF (SO)	MATERIAL/ PLATING
A = DIP	A = .100[2.54]	258B 258G 268A	D = Double T = Top S = Bottom O = No Solder	22 = .022[0.558] 35 = .035[0.914] 46 = .046[1.17] 56 = .056[1.42]	See Chart on Page 11	O = No Stop S = Stop	E = .080[2.037] L = .150[3.81] T = .220 [5.59]	E = Phosphor Bronze Pre-Plated 100% Sn K = Phosphor Bronze Post-Plated 100% Sn G = Phosphor Bronze Pre-Plated Sn50/Pb40 H = Phosphor Bronze Post-Plated Sn50/Pb40

CODE: